

---

**POWER**TAGGER

 [powertagger.com](http://powertagger.com)



**\*Apply 800 to 1,000 tags with one charge.**

**\*Charging time to fully charged approx. 1.5 to 2 hours.**

**\*Models:**

- Multi-Tag Tagger
- One Piece Tagger

## **The Original Battery Power Assisted Universal Tag Applicator**

## Thank you for choosing the Original Power Tagger™

**Please Note:** If it's not badged Power Tagger, it's not an original Power Tagger!

**Please read this operation manual thoroughly before use to avoid accident or injury.**



### Operating instructions

1. Non-professional personnel should not operate this device.
2. Do not put your hand into the clamp while working.
3. Keep the rotating shaft lubricated when in use.
4. Battery should be fully charged before use.
5. Press the power switch for 2 seconds and press the trigger 2 times to wake up the device.
7. Before working, press the trigger to close the clamp several times, check for normal function and adjustment before starting to work. With safety mode set the button on the side should be pressed prior to each application.
8. Depending on the make, model and type of tag, the correct pin should be chosen. The closing distance can also be adjusted to suit if required. See instructions on adjusting.
9. In normal operation, press the trigger to close. Post application the jaw re-open. To reduce the jaw re-opening distance if required, press the trigger for 6 seconds until two beeps are heard. To return to normal opening distance, repeat the procedure.
10. Shutdown: Press the power switch for 2 seconds to turn it off. After 10 minutes of standby the jaws will close, and the applicator will switch off.
11. To remove the battery: Press the button on the battery box and pull out the battery horizontally outwards.
12. While the Device has IP65 rating it is recommended not to operate this device in the rain.

### Two Available Models



Multi-Tag Tagger    One Piece Tagger

**It is essential to ensure that the correct pin is used to suit brand of tags to be applied.** Industry standard pins are supplied. Alternative pins are available to purchase separately.

#### One Piece Tagger

To Apply One Piece tags, ensure the correct pin is used. The Power Tagger is supplied with industry standard 28mm pins.

#### EID/USDA Tagger

To Apply EID/USDA Tamper evident/ closed cap tags. **Remove the plastic insert.**

To Apply most two-piece VID tags/Fly tags. Leave plastic insert in.

Power Tagger are supplied with industry standard red universal pins.

## Routine Maintenance/Troubleshooting

As with most Power tools some routine maintenance is required such as lubrication and tightening. It is important to check the operation of your PowerTagger and ensure the center spigot is tight on a regular basis.

If there is the sound of a gear slipping when operating, a clicking sound, then the spigot may have become slightly loose from repeated use. **Proceed with caution.**

**A:** The large black bolt should be slightly unscrewed, using the tools provided.

**B:** Tighten the Silver nut (see image) and then tighten the black Bolt again.

**C:** Take the opportunity to apply a drop of oil/lubricant to the jaws at this time.



If there is NO the sound of a gear slipping when operating, then it may be that the side screws were not tightened after adjusting the closing distance, and the vibration during operation caused the screws to become loose and need to be tightened. In addition, the travel distance needs to be adjusted to the maximum or minimum.

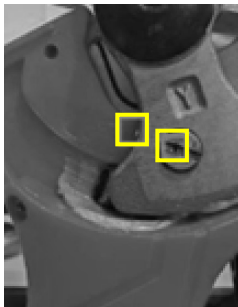


**Operation steps to adjust travel distance: Not normally required.**

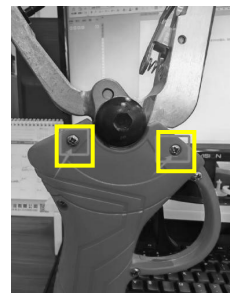
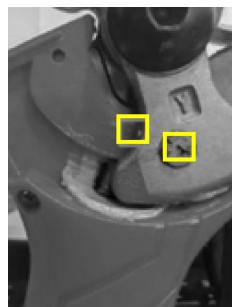
**D:** Loosen the two screws counterclockwise, open the cover the loosen the side screw by Turning counterclockwise.

**E:** When the travel distance is at its largest, *Fig A* looks like this (the circled points are closest and on the same line)

*Fig A:*



*Fig B:*



**F:** When the travel distance is at Maximum, turn the gold screw 180 degrees counterclockwise and the travel distance will be the smallest. See *Fig B* this is what happens when the travel distance is the smallest.

**G:** Repeat step D in reverse. Tighten side screw. Then replace cover and tighten two outer screws.








## Battery Charging

The Li-ion battery connects to the charger and the charger plug connects to the power socket. The LED indicator on the battery will turn RED during charging and turn GREEN when the battery is fully charged.

### Caution:

1. Before charging, please ensure the battery power switch is in the OFF position. During charging it is normal for the charger and battery to be warm.
2. Where the battery has not been used for a long period of time, it is recommended to charge the battery at least once every 3 months to ensure the battery life is not affected by low usage and discharge.
3. For a new battery, not used for a long period of time, it will be necessary to carry out approx. 5 charge and discharge cycles before the battery will achieve full charge capacity.
4. DO NOT recharge a fully charged battery just after a few minutes of usage as this will reduce the battery lifespan and efficiency.
5. DO NOT use a damaged battery and DO NOT disassemble the charger or the battery.
6. DO NOT place the battery near high temperature heat source as the battery may explode in fore or after prolonged exposure to a high heat source.
7. DO NOT charge the battery in an outdoor or humid environment.
8. DO NOT attempt to use the Power Tagger during charging.
9. DO NOT store the battery in a humid environment.
10. Batteries should be placed out of the reach of children.

## Battery Indicators

	100% Battery	Voltage 19.0V – 21.0V
	75% Battery	Voltage 18.0V – 19.25V
	50% Battery	Voltage 17.0V – 18.25V
	30% Battery	Voltage 16.25V – 17.25V
	Blinking 8 Times	Undervoltage or overpressure



## Battery Data

AT210-V	
Weight	1.1Kg
Torsion	1132mN. m
Rated Voltage	DC 21V
Charging Voltage	AC110V-220V
Battery Capacity	2000mAh
No Load Speed	24000r/min
Certification	UN38.3



## Finger Protection (Anti hand pressure) Function

There is Protection Function set as standard. When this function is turned on, you must press the red button on the side of the handle to tag. If you don't press it, it won't function. This prevents accidental injury to your hand. When the anti-hand pressure function is turned off (optional), you can tag continuously, but the user must pay careful attention to safety.

With a hand on the trigger, if the other hand touches the clamp arm, the controller will make an alarm. The Finger Protection function is realized through the controller, induction trigger and clamp arm current loop. For example, if the current is blocked or the operator wears gloves, this function will lose efficacy.

### Anti-Pressure function control:

The first time: Power off → press and hold the power button for 6 seconds → hear a beep → press the red button → turn on (off) the anti-hand pressure function.

### To deactivate Finger Protection Function:

#### Not recommended

Press the power switch for 1 second and press the trigger for 5 seconds to hear 2 beeps. Then press the trigger 2 times to wake up the Power Tagger.



## Start-up Procedure

1. Install the lithium battery at the bottom of the clamp.
2. Press the power switch for 2 seconds, press the trigger 2 times to wake up the pliers.



### Function Conversion

1. In normal operation, press the wrench clamp to close, open the trigger clamp to open, and press the trigger for 6 seconds to hear 2 beeps and release clamp size function conversion.



### Shutdown & Maintenance

1. Install the lithium battery to the bottom of the clamp.
2. Press the power switch for 2 seconds, press the trigger 2 times to wake up the pliers.



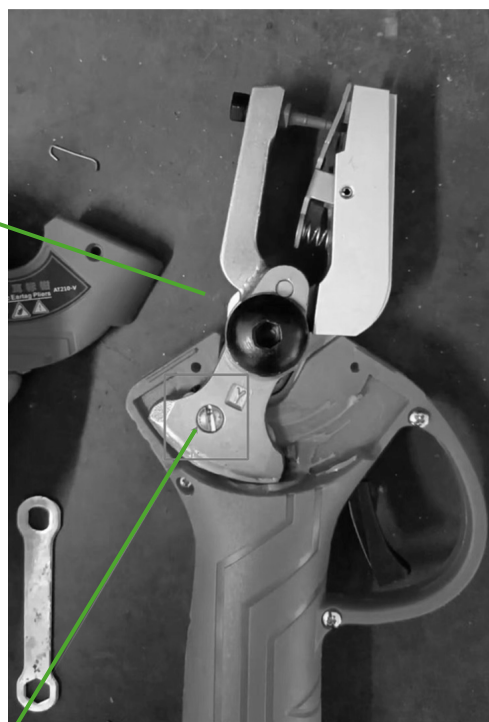
## Operation Indicators

For LED flashing indicators, see table below:

<b>LED Indicators</b>	Flash 1 time: Finger Protection Function
	Flash 2 times: Electric Current Standard Error
	Flash 3 times: NOS Damage
	Flash 4 times: Hall fault (Not used)
	Flash 5 times: Overcurrent Protection
	Flash 6 times: Overload
	Flash 7 times: Phase Loss Protection
	Flash 8 times: Undervoltage or Overpressure
	Flash 9 times: Temperature too high
	Flash 10 times: Communication Error
	Flash 11 times: EPROM Error
	Flash 12 times: Phase Detection Failed
	Flash 13 times: Programming Error

For adjustment if required, see Routine Maintenance/Troubleshooting section, page 3.

**Fig.1**



**Fig.2**

1. With the device jaws in the closed position and device switched off (battery removed).
2. Remove two screws holding cover plate in position.
3. Slightly unscrew retaining screw (Fig 1).
4. Adjust screw (Fig.2) to move jaw further in or outwards to ensure the pin does not pierce or push the tamper evident cap on the female tag if present.

### What's included:

- 1 x Hard carry case
- 2 x Li-ion removable batteries
- 1 x Country Specific Charger
- 1 Pack of spare tagger pins:
  - Multi tagger includes universal red pins
  - One piece Tagger includes 28mm black pins.
- 1 Spare clip/Spanner/tool kit

---

## Warranty

The warranty is valid for 12 months from the date of purchase. It covers all repair costs of the tagger caused by a product defect.

Any damage caused by the customer due to misuse, lack of maintenance or use not in accordance with the instructions will not be covered by the warranty.

To claim under the warranty the tagger should be registered at the time of purchase and returned together with the certificate card supplied to your supplier. For contact details see our website.

## Environmental

Please carefully abide by national laws and regulations.

Electronic and electrical appliances cannot be treated as domestic waste. Equipment, accessories and packaging are recyclable.

It is forbidden to discard scrapped machinery and equipment at will.

## Disclaimer

The company reserves the right to make technical improvements to the product described in this manual. We appreciate your understanding.

There may be discrepancies between graphics, images, illustrations and text in this manual and actual product supplied. In some cases, please refer to the actual product.

## Contact information:

For further information visit: [www.powertagger.com](http://www.powertagger.com)

